

LC Connector Products

Siemon LC products offer all the benefits of SC and ST connectors in a Small Form Factor (SFF), high-density design. LC adapter products are compatible with our popular MAX™, CT®, FOB and SM® work area products and our telecommunications room products, providing a wide variety of installation options. All fiber adapters are "universal" to support either multimode or singlemode fiber connections. LC connectors take just 2 minutes to terminate, using the Siemon *LightSpeed™* Termination Kit with LC upgrade option. LC multimode solutions are available today and a complete line of singlemode products will be available Q2 2000.

Simplex LC connectors terminate buffered fiber and help maintain proper bend radius requirements in tight spaces

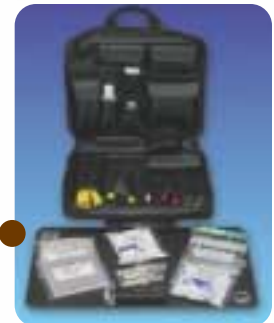
LC multimode connectors terminate either 62.5/125µm or 50/125µm multimode fiber

LC connectors use the familiar "RJ" style latch found on copper modular plugs

Multimode LC connectors terminate in just 2 minutes using our *LightSpeed™* Termination Kit (with LC upgrade option) minimizing field installation labor

Jumper combinations available include LC to LC, LC to SC, and LC to ST

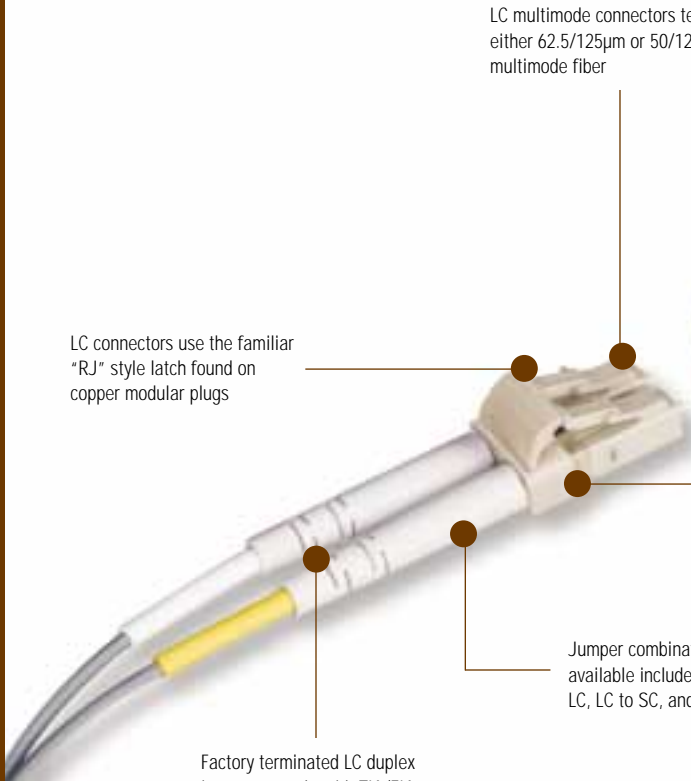
Factory terminated LC duplex jumpers comply with TIA/EIA 568-A and ISO/IEC 11801 fiber performance specifications



LightSpeed™ Termination Kit



LC Upgrade Kit



LC CT® Couplers with LC Jumper



LC connectors are about half the size of SC duplex connectors, providing significantly greater density



Use Siemon LightSpeed™ Termination Kit with LC upgrade option to terminate LC connectors in the field



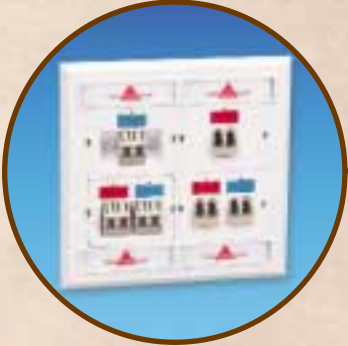
WORK AREA SOLUTIONS



Simplex & Duplex LC Fi



MAX™ LC Modules in
MAX™ Faceplate
[MX-FP-S-04-(XX) shown]



CT® Flat & Angled
LC Couplers in
CT® Faceplate
[CT8-FP-(XX) shown]



MAX™ & CT® LC
Modules in Multi-user
Telecommunications
Outlet (MuTOA)
[CT-MMO-(XX) shown]



FOB LC Bezels in
Fiber Outlet Box
[FOB-(XX) shown]



LC SM BEZEL in SM®
Box
[SM2-(XX) shown]



LC — Simplex



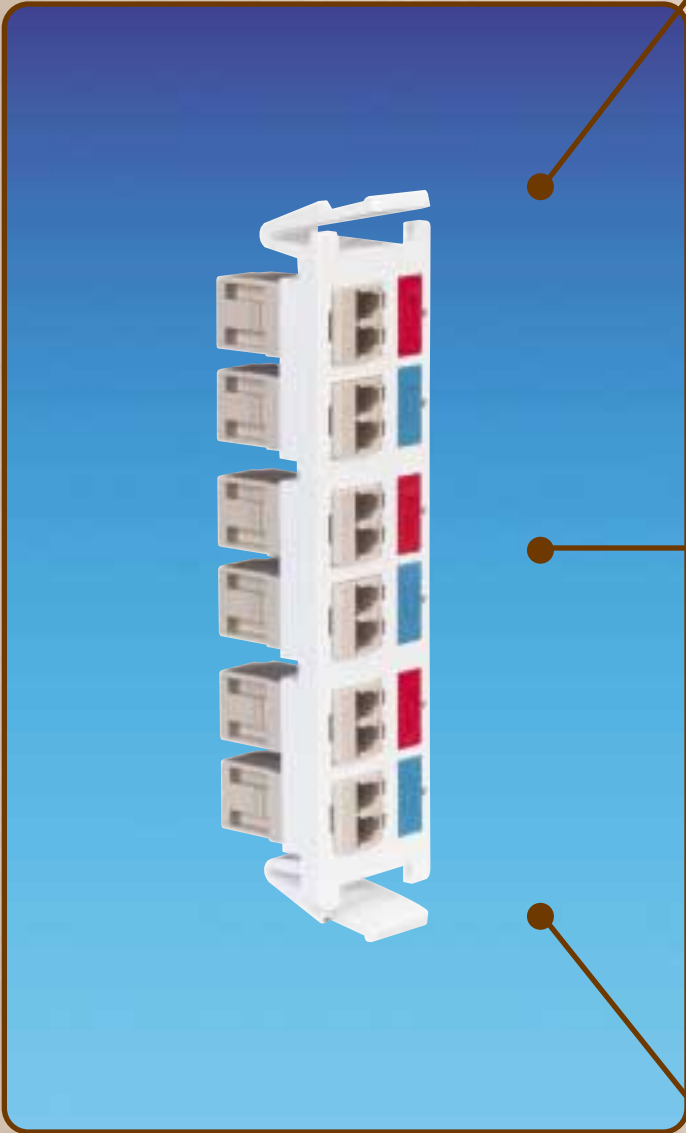
LC — LC Duplex

LC Ju

TELECOMMUNICATION ROOM SOLUTIONS



Field-Installable Connectors



LC Quick-Pack™ Adapter Plate in RIC48

The Rack Mount Interconnect Center provides high-density fiber management and distribution for 6 to 144 fibers on a 19 or 23 inch rack. Available in 24/48-, 36/72-, 48/96- and 72/144-port sizes.



LC Quick-Pack™ Adapter Plate in SWIC2G

The Wall Mount Interconnect Center is designed to manage and connect up to 48 fibers. Available with or without integrated jumper guard and with various lock or latch options. A Mini-SWIC2 (SWIC2-M) is also available.



LC Quick-Pack™ Adapter Plate in FCP2-DWR

The Fiber Connect Panel rack mount enclosures economically connect, protect and manage up to 36 fibers within one Rack Mount Space (RMS).

Jumpers



LC — SC Duplex



LC — ST Duplex

Ordering Information

LC Work Area Solutions:

LC Field-Installable Connectors

Siemon LC connectors pack all the benefits of duplex fiber optic performance into a compact "RJ" style design. LC connectors are compatible with a wide variety of Siemon work area and telecommunications room solutions.

Multimode

- FC1-LC-MM-B80LC Simplex connector, multimode, buffered fiber, beige boot
- FC2-LC-MM-J80LC Duplex connector, multimode, jacketed fiber, beige boot

Singlemode (available Q2 2000)

- FC1-LC-SM-B02LC Simplex connector, singlemode, buffered fiber, white boot
- FC1-LC-SM-J02LC Simplex connector, singlemode, jacketed fiber, white boot

LC MAX™ Module

The Siemon LC MAX™ module is compatible with all MAX™ series faceplates, Multi-user Telecommunication Outlet Assemblies (MuTOA), patch panels, modular furniture adapters, and SM® Boxes.

- MX-F-LC(X)-(XX)Flat module with 1 duplex LC adapter (2-ports)

Use (X) to specify LC adapter color: blank = beige, U = blue
 Use (XX) to specify color: 01=black, 02=white, 04=gray, 20=ivory, 80=light ivory

Modules include dust caps, one color-matching (clear for black), plus one red and one blue icon
 Add "-C" for ceramic sleeve option

LC CT® Couplers

LC CT® Couplers are compatible with all Siemon CT® series faceplates, patch panels and MuTOA.

- CT-LC(X)-(XX)Flat coupler with 1 duplex LC adapter (2-ports)
- CT-LC(X)-LC(X)-(XX)Flat coupler with 2 LC adapter (4-ports)
- CT-A-LC(X)-(X)Angled coupler with 1 duplex LC adapter (2-ports)
- CT-A-LC(X)-LC(X)-(XX) ..Angled coupler with 2 LC adapter (4-ports)

Use (X) to specify LC adapter color: blank = beige, U = blue
 Use (XX) to specify color: 01=black, 02=white, 04=gray, 20=ivory, 80=light ivory

Add "-C" for ceramic sleeve option
 Couplers include dust caps, one color-matching icon (clear for black), plus one red and one blue icon

LC Fiber Outlet Box (FOB) Bezels

Siemon LC FOB bezels are designed to fit into our low-profile Fiber Outlet Box, an optimal solution for bringing fiber to the desk.

- FOB-BZL-LC(X)1-011 Duplex LC adapter, (2-ports)
- FOB-BZL-LC(X)-012 Duplex LC adapters, (4-ports)

Use (X) to specify LC adapter color: blank = beige, U = blue

LC SM® Surface Mount Box solutions

These connector options use 2 port locations, each having two adapters per port (4-ports).

- SMC-LC(X)-(XX)Dual bezel with 2 duplex LC adapters (4-ports)

Use (X) to specify LC adapter color: blank = beige, U = blue
 Use (XX) to specify color: 01=black, 02=white, 04=gray, 20=ivory, 80=light ivory

Add "-C" for ceramic sleeve option

The Siemon Company
Australia

Sydney, Australia
 Tel: (61) 2 9452 2666

The Siemon Company
Canada

Markham, Ontario
 Tel: (1) 905 940 9223

The Siemon Company
China

Beijing, P.R. China
 Tel: (86) 10 6559 8860

The Siemon Company Ltd.
Europe & Middle East

Woking, England
 Tel: (44) (0) 1483 480040

The Siemon Company
Latin America

Coral Gables, Florida USA
 Tel: (1) 305 446 9150

Latin American Sales
Manufacturer's Representatives

Castroville, Texas USA
 Tel: (1) 830 538 6375

The Siemon Company
Southeast Asia

Singapore
 Tel: (65) 345 9119

The Siemon Company
USA

Watertown, Connecticut
 Tel: (1) 860 274 2523

LC Modular Patching Solutions:

LC Quick-Pack™ Adapter Plate

Siemon LC Quick-Pack™ adapter plates retain all the popular features of our existing adapters plates with greater density — 12-ports instead of the typical 6, and are compatible with all existing Siemon RIC, SWIC; and FCP2 fiber optic enclosures.

- RIC-LC(X)12-(XX)6 duplex LC adapters (12 ports)

Use (X) to specify LC adapter color: blank = beige, U = blue

Use (XX) to specify Adapter Plate color: 01 = black, 02 = white

Add "-C" for ceramic sleeve option

Note: All adapters are "universal" to support multimode and singlemode applications

LC Jumpers

Siemon LC jumpers are factory terminated and polished, assuring optimum performance. LC jumpers are guaranteed to meet TIA/EIA 568-A and ISO/IEC 11801 fiber performance specifications and are available in LC to LC and hybrid LC to SC and ST options.

Duplex

- FJ2-LC(LC(X)MM)-(XX)LC to LC multimode, 50/125 or 62.5/125µm
- FJ2-LC(LCU)-(XX).....LC to LC singlemode
- FJ2-LCSA(X)MM-(XX)LC to ST multimode, 50/125 or 62.5/125µm
- FJ2-LCUSAU-(XX)LC to ST singlemode
- FJ2-LCSC(X)MM-(X)LC to SC multimode, 50/125 or 62.5/125µm
- FJ2-LCUSCU-(XX).....LC to SC singlemode

Simplex

- FJ2-LC(LCU)-(XX).....LC to LC singlemode
- FJ2-LCUSAU-(XX)LC to ST singlemode
- FJ2-LCUSCU-(XX).....LC to SC singlemode

Use (X) to specify multimode fiber type: 6 = 62.5/125µm (gray jacket), 5 = 50/125µm (orange jacket)

Use (XX) to specify cable length: 01=1m (3.3 ft.), 03=3m (9.8 ft.), 05= 5m (16.4 ft.)

Notes: Multimode performance: 0.30dB typical insertion loss; 25dB typical return loss

Singlemode performance: 0.30dB typical insertion loss; 55dB minimum return loss

All jumpers and pigtails are manufactured using OFNR riser grade cable that meets UL 1666. All connectors include ceramic ferrules

Tools:

Siemon LightSpeed™ Termination Kit

The Siemon LightSpeed™ Termination Kit makes field termination of connectors quick and easy. The kit includes all tools required to terminate ST and SC connectors in a durable carrying case.

- FTERM-L.....LightSpeed™ Termination Kit

LC Fiber Termination Upgrade Kit

- FTERM-LC.....LC Fiber Termination Kit (used in conjunction with FTERM-L)

For related product information request Spec Sheet(s):

- CT® Faceplates (PROD-SS-CTF)
- CT® Patch Panel (PROD-SS-CTF)
- Fiber Outlet Box (PROD-SS-FOB)
- MAX™ Modular Faceplates (PROD-SS-MXF)
- MAX™ Patch Panel (PROD-SS-MXP)
- Rack Mount Interconnect Center (PROD-SS-RIC)
- Wall Mount Interconnect Center (SWIC2) (PROD-SS-WI2)
- SM® Series Surface Mount Box (PROD-SS-SM2)
- Multi-user Telecommunications Outlet (MuTOA) (PROD-SS-MMO)

